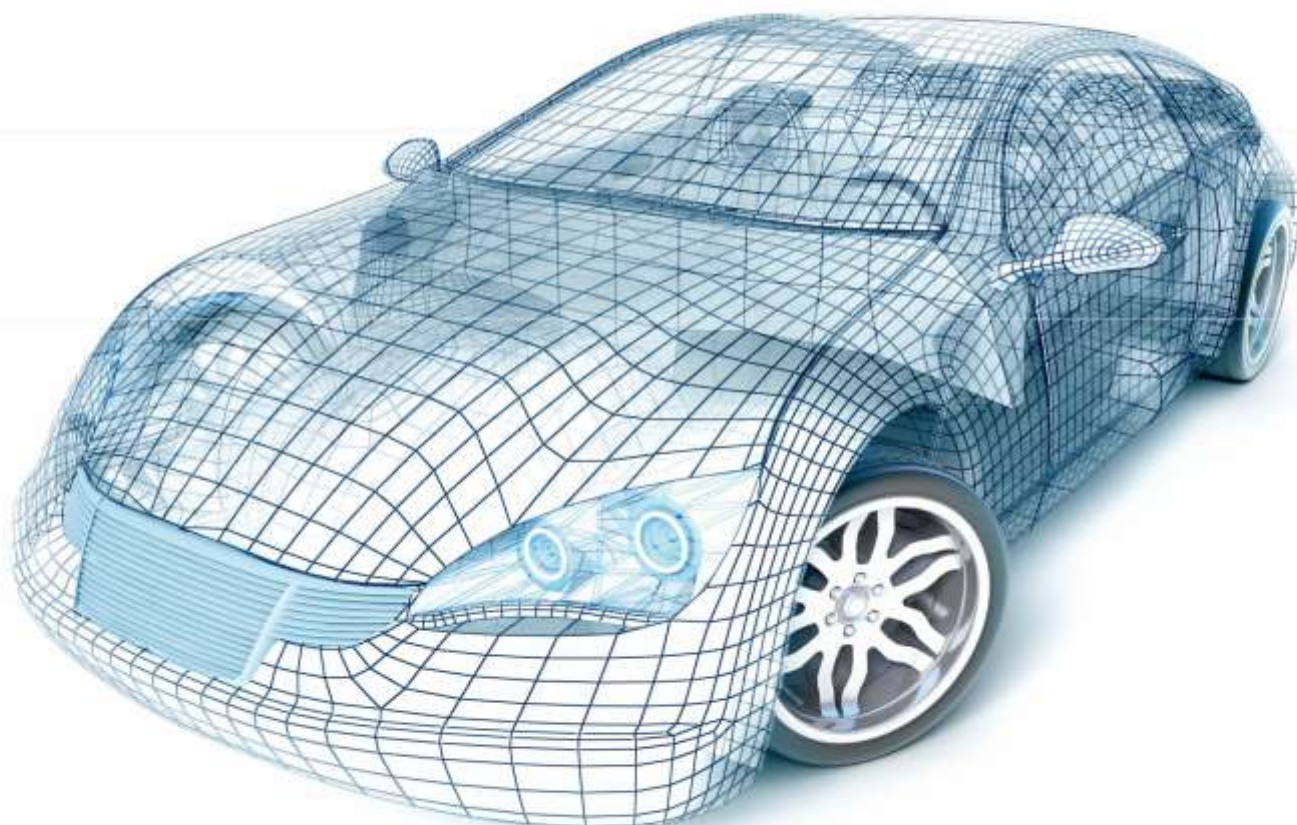
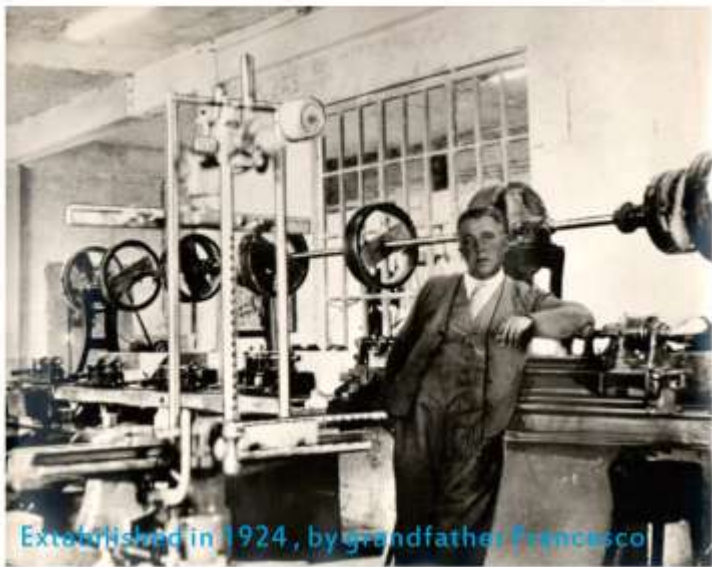


TAVOLE LAVORABILI PER MODELLI, ATTREZZI E STAMPI CNC.  
High quality machinable board materials.





Established in 1924, by grandfather Francesco

Valpolymer is a family company, established in 1924 by grandfather Francesco, initially as a producers of buttons for garment industry, based on natural and plastic polymeric materials, from 1969 PU Shoe soles. Since 2002, VALPOLYMER SRL specialized his production in the molding of polyurethane, thermoplastic and thermosetting resins for technical products for Industry. Valpolymer srl is specialised in small-medium lot of production, mainly based on customers specs and designed as well as custom taylored products and/or totally designed by Valpolymer R&D dept. Thanks to that, Valpolymer srl is owner of several



## Lab & Production

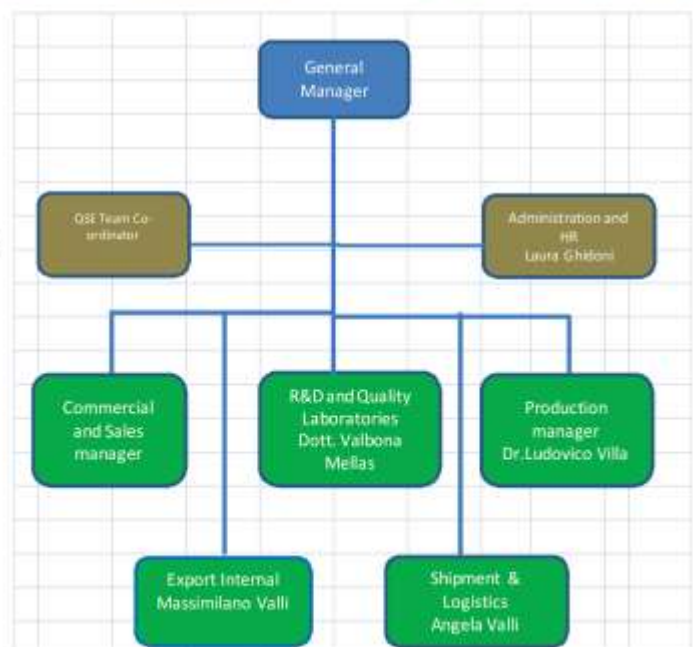


## Company Ethics and Responsibilities

Our mission is always focused on following science and technology especially for products which are important for safety and environmental care.

We will continue to contribute to these targets throughout the years together with the help of our customers, for the best results. Safety and environmental care in all its aspects is not just our business but our commitment and our passion.

**Antonio Valli**  
Amministratore Unico Valpolymer srl





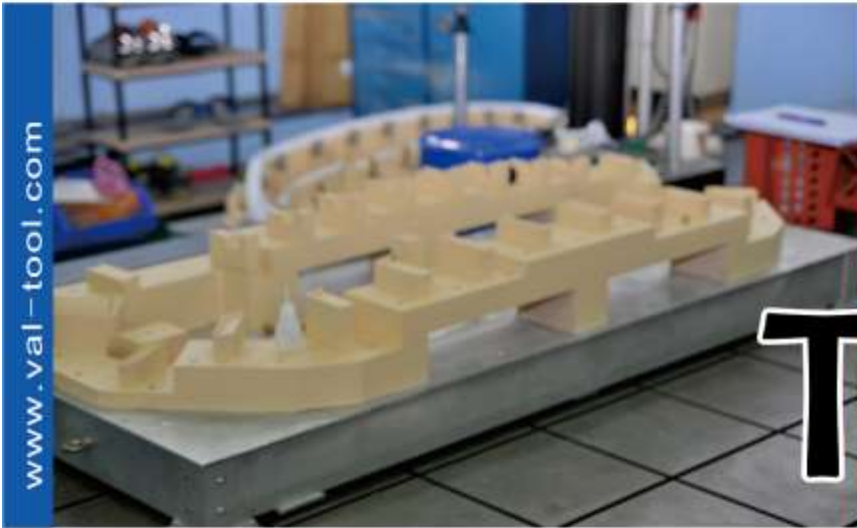
PRODUCT	VAL-180	VAL-302	VAL-480	VAL-550
Colour	Light Grey	Pink	Apricot	Light Brown
Density, Kg/cm	170-200	280-320	450-480	500-550
Characteristics	Low density Uniform cell Easy workable	Low density Well thin cell Easy workable	Med-low density Good cell Easy workable Good shaving	Med-low density Good cell Easy workable Good shaving
Applications	Mocks-up Milling trials Styling	Styling Thermalforming trial tools	Style models	Cheap cost Master models Foundry patterns
Liner thermal expansion, 10 <sup>-3</sup> /°C	55-60	55-60	55-60	55-60
Hardness Shore-D	30-35	40-45	55-60	55-60
Flexural strength, N/mm	2-4	4-8	9-13	15-18
Flexural E-Modulus	55-70	180-200	400-450	550-600
Compression strength, N/mm	2-3	4-5	9-11	15-18
Abrasion resistance	N	N	1600-1700	1200-1300
Heat distortion, °C	78-83	78-83	78-83	78-83
Dimensions, mm	1500x500x100 1500x500x150	1500x500x100 1500x500x150	1500x500x50 1500x500x75 1500x500x100	1500x500x50 1500x500x75 1500x500x100



# Modeling

www.val-tool.com

PRODUCT	VAL-650	VAL-700	VAL-720	VAL-1100
Colour	Light Brown	Light Brown	Light Brown	Off white
Density, Kg/cm	600-650	700	720	1050-1150
Characteristics	Medium density Good surface Easy workable Good shaving	Medium density Good surface Easy workable Good shaving	Medium density Good surface Easy workable Good shaving	Low expansion Good surface
Applications	Master models Foundry patterns Styling	Master models Foundry patterns Styling	Master models Foundry patterns Styling	Foundry patterns Core boxes Gauges
Linear thermal expansion, 10 <sup>-3</sup> /°C	55-60	55-60	55-60	48-53
Hardness, Shore D	67-72	67-72	67-72	83-87
Flexural strength, N/mm	21-25	21-25	21-25	60-65
Flexural E-Modulus	750-850	750-850	750-850	2000-3000
Compression strength, N/mm <sup>2</sup>	15-20	15-20	15-20	55-65
Abrasion resistance	1000-1100	1000-1100	1000-1100	400-500
Heat distortion, °C	78-83	78-83	78-83	85-90
Dimensions, mm	1500x500x50 1500x500x75 1500x500x100	1500x500x50 1500x500x75 1500x500x100	1500x500x50 1500x500x75 1500x500x100	1000x500x50 1000x500x75 1000x500x100



# Tooling

www.val-tool.com

PRODUCT	VAL-EB690	VAL-1250	VAL-1500	VAL-1660
Colour	Light Blue	Green	Red	Grey Aluminium
Density, Kg/cm <sup>3</sup>	670-710	1200-1300	1450-1550	1600-1700
Characteristics	Filled epoxy High Tg Low expansion	Filled PU Good compression Low expansion Excellent surface	Good compression Low expansion Excellent surface	Aluminium filled Good thermal Good compression Good polishing
Applications	Master model Prepreg tools Vacuum forming	Foundry patterns Core boxes Sheet metal form Hammer tools	Foundry patterns Core boxes Sheet metal form Gauges	Sheet metal form Foundry patterns Vacuum forming PU moulds
Liner thermal expansion, 10 <sup>-3</sup> /°C	38-42	48-53	48-53	40-45
Hardness, Shore D	74-78	87-91	83-87	87-91
Flexural strength, N/mm <sup>2</sup>	32-40	75-85	75-80	80-85
Flexural E-Modulus	2000-3000	2800-3300	4600-5500	5500-6500
Compression strength, N/mm <sup>2</sup>	55-65	85-90	90-100	100-110
Abrasion resistance	800-1000	400-500	400-500	400-500
Heat distortion, °C	132-138	80-85	80-85	85-90
Dimensions, mm	1500x500x50 1500x500x75 1500x500x100	1000x500x100 1500x500x30 1500x500x50 1500x500x75	1000x500x50 1000x500x75 1000x500x100	1000x500x50 1000x500x75 1000x500x100



**VAL-TOOL™**  
Machinable Board Materials



[www.val-tool.com](http://www.val-tool.com)

**Valpolymer S.r.l.**

Via V. Alfieri, 1 - 24060 Credaro (Bg) - Italia

Tel: +39 035 4265011 - FAX: +39 035 935203

Global contact: [info@valpolymer.com](mailto:info@valpolymer.com)

Asia region: [asia@val-tool.com](mailto:asia@val-tool.com)

Our recommendations on the use of the material are based on many years of experience and current scientific and practical knowledge. They are, however, provided without any obligation on our part and do not relieve the user of the need for suitability tests. They do not constitute a legal relationship, nor are any protected third party rights whatsoever affected thereby.

No liability accepted for misprints.

***Distribution partner :***

